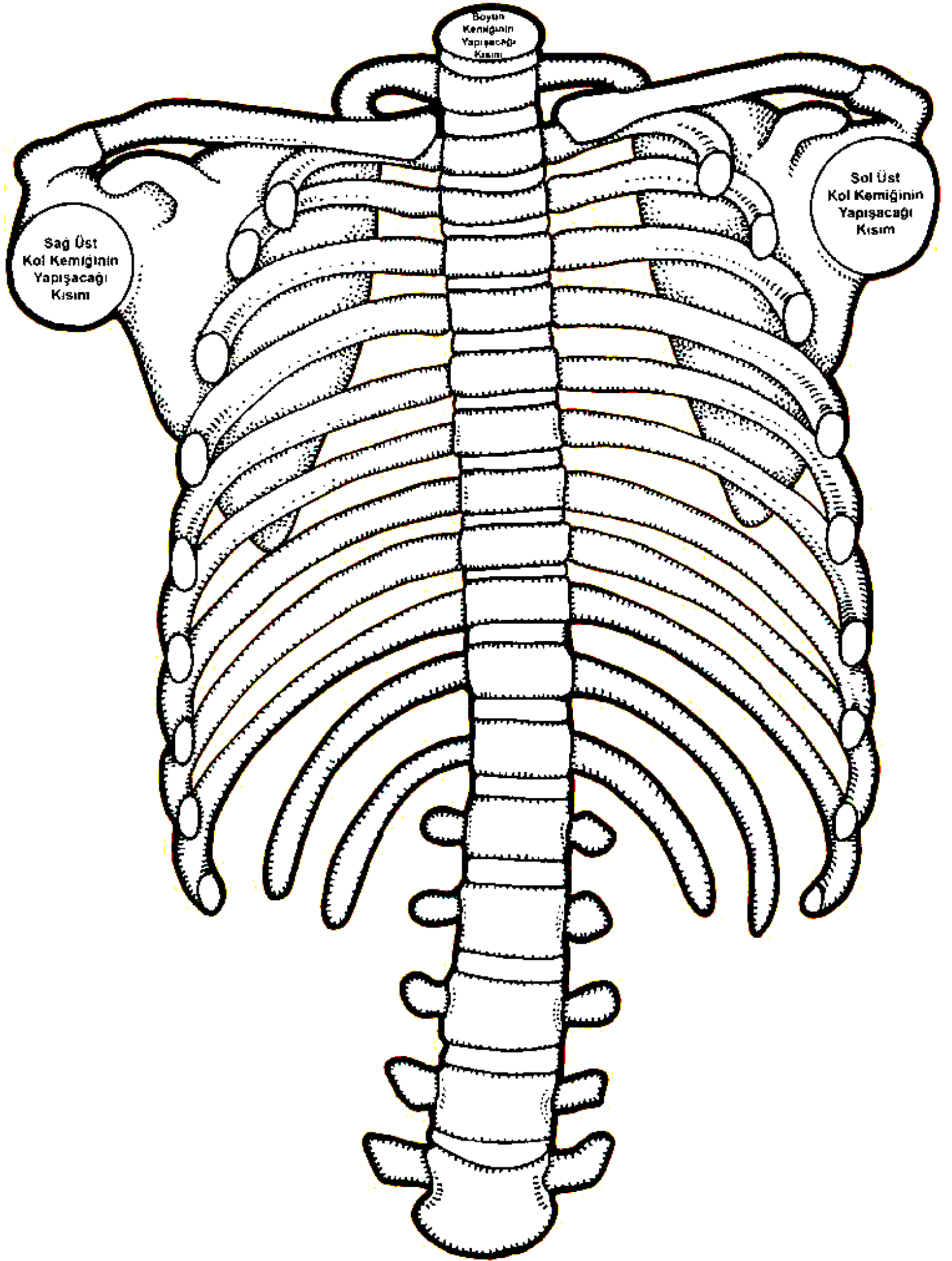
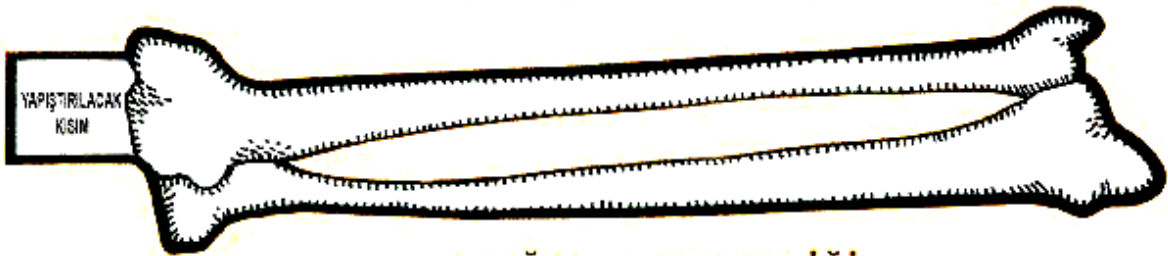
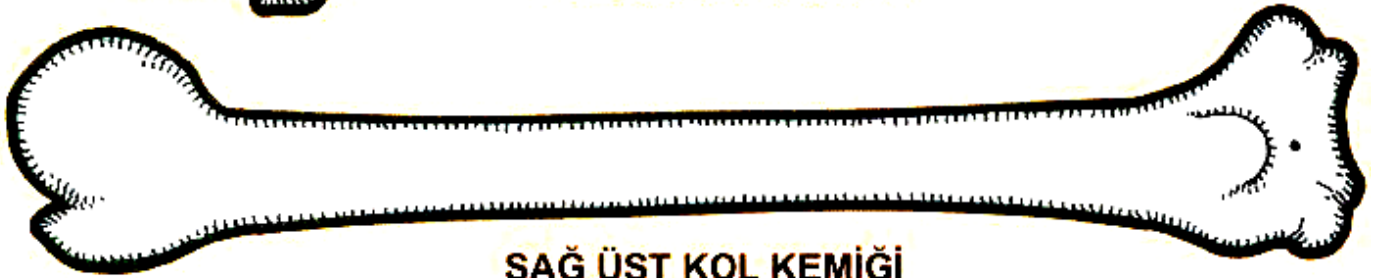
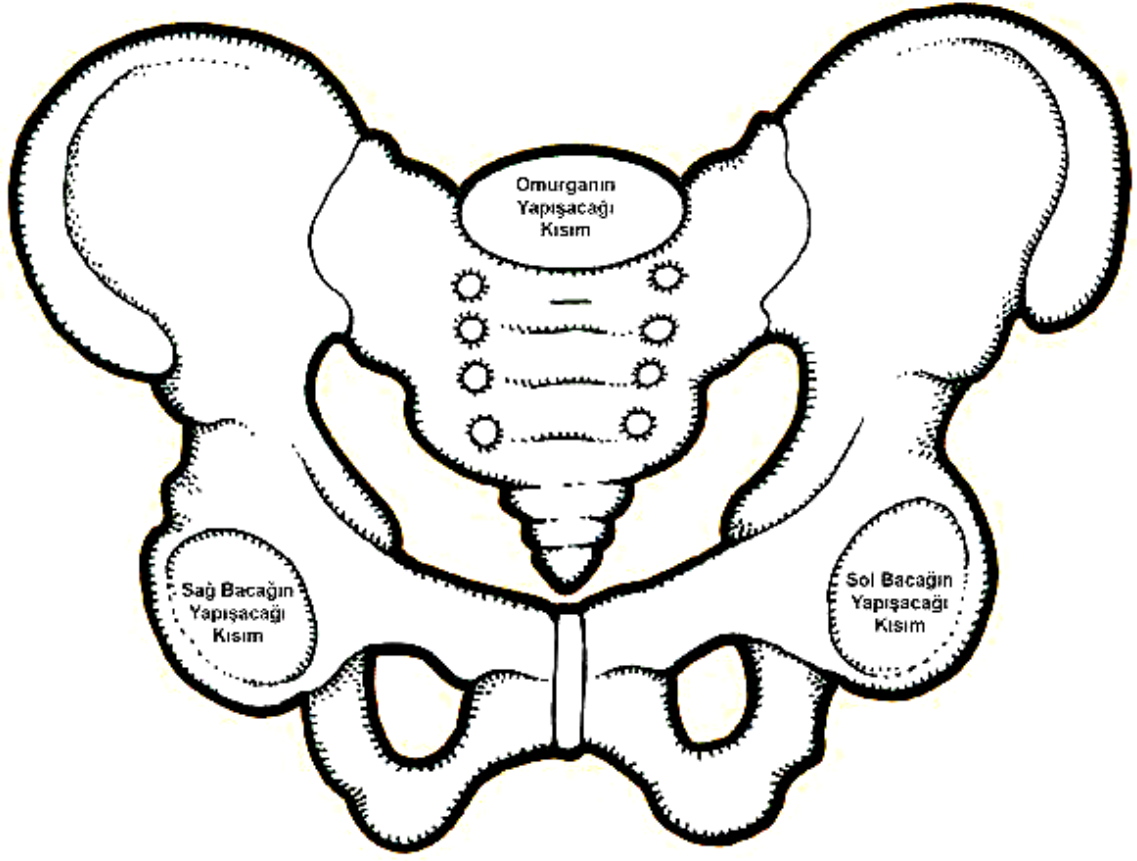
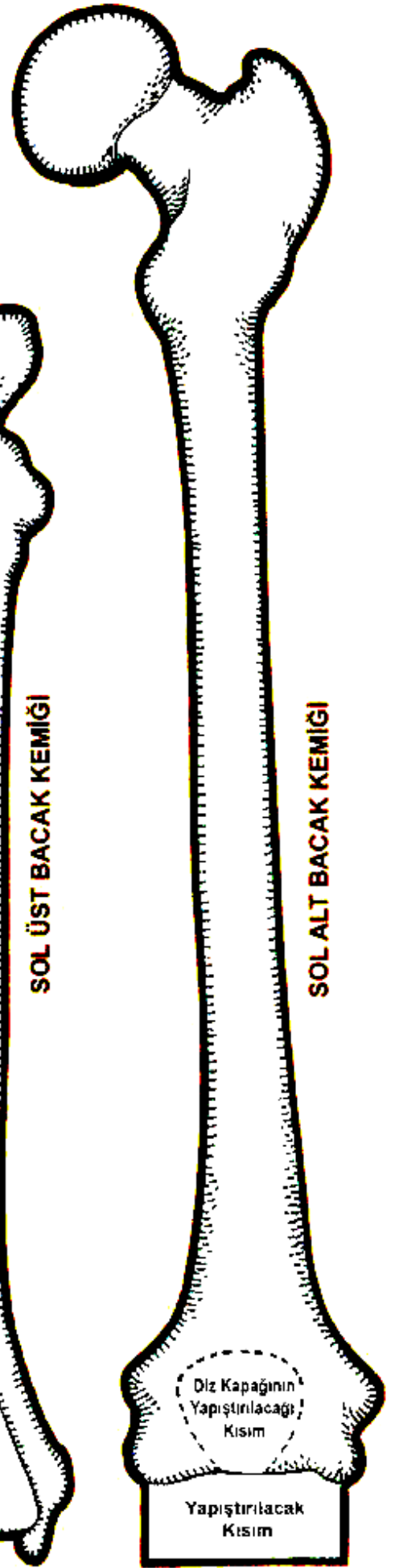
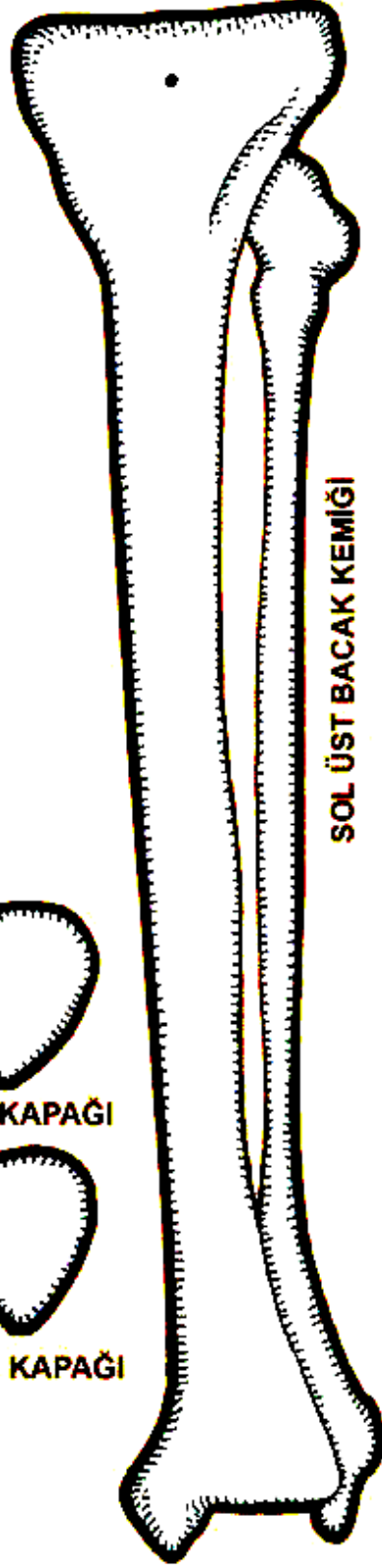
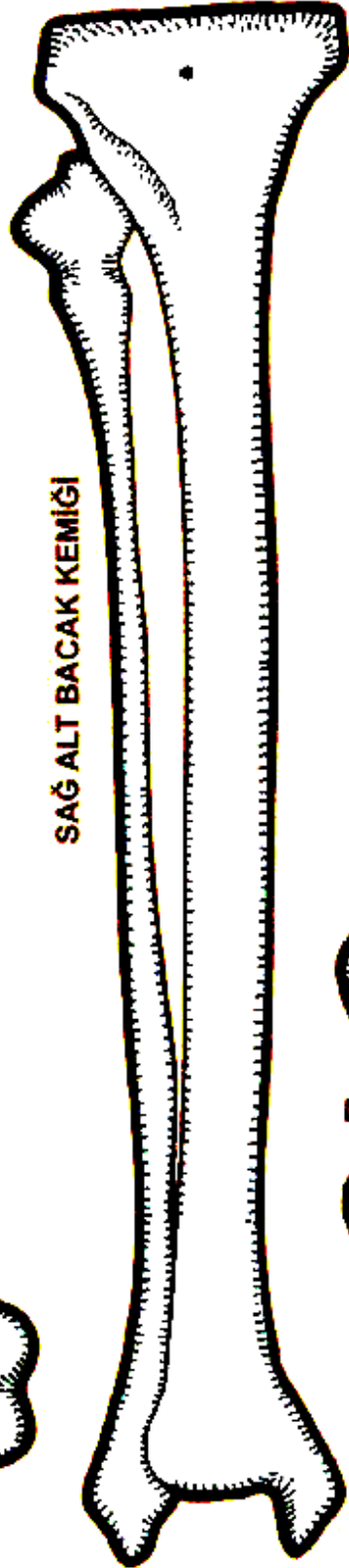
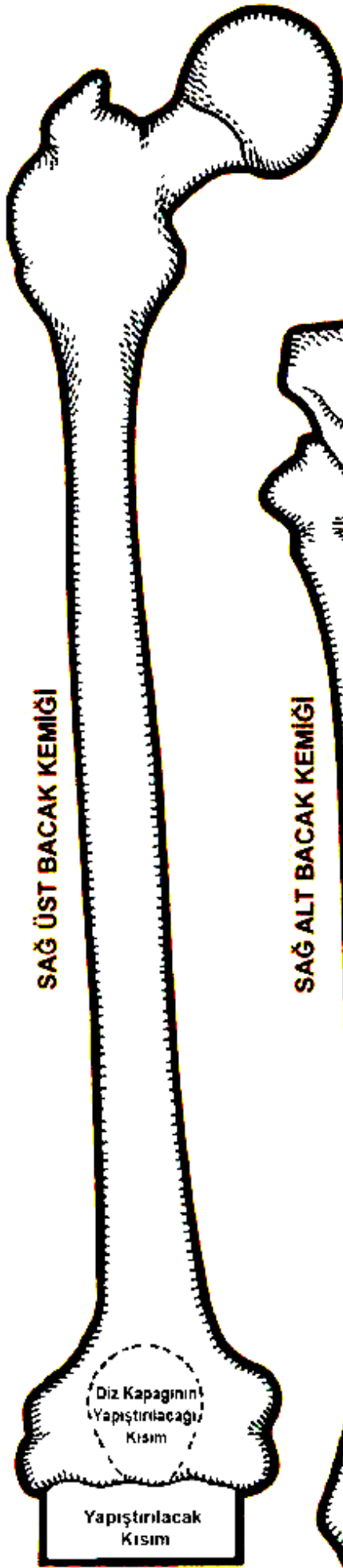


- KEMİKLER, DIŞ KISIMLARINDAN İTİBAREN KESİLEREK BİRBİRİNE YAPIŞTIRILACAK.
- OLUŞTURULAN İSKELET MODELİ İSTEĞE BAĞLI OLARAK FARKLI MALZEMELERLE SÜSLENEBİLİR. (KIZ VEYA ERKEK OLARAK, SAKAL VEYA BIYIK ÇİZİLEREK, KORSAN VEYA FARKLI FİĞÜRLER ŞEKLİNDE DÜZENLENEBİLİR.).
- DÜZENLENEN İSKELET MODELLERİ KARTON, RENKLİ FON KAĞIDI VEYA STRAFOR ÜZERİNE YAPIŞTIRILABİLİR.







# Eğlenerek Öğren

Tüm sınıf ve derslerde



[www.fenaktivite.com](http://www.fenaktivite.com)

**Pdf ye tıkla!**